

FlexiPrint

TOP FEATURES

		FlexiPrint Server	FlexiPrint
CLIENT	Print Jobs from any Application	✓	✓
	Customizable Network Hotfolders	✓	
JOB CONTROL	Multiple Contour Cut support	✓	✓
	Nest Contour Cut jobs	✓	✓
	Job Estimation	✓	
	Ink Estimation	✓	✓
	TWAIN (scan directly to queue)	✓	✓
	Repeat Job	✓	✓
	Print Wizard	✓	✓
	Job Nesting: Manual & Automatic	✓	✓
	Interactive Tiling	✓	✓
	Presets: Import, Save, Apply & Export	✓	✓
	Edit queued jobs with 3rd party applications	✓	✓
	Contour Cut to Hybrid Printer/Cutter	✓	✓
RIP	Contour Cut to Virtual Hybrid Printer/Cutter	✓	✓
	Simultaneous Output Threads	3	2
COLOR MANAGEMENT	CMYK & Spot Color Separations	✓	✓
	Utilize 3rd Party ICC Output Profiles	✓	✓
	Object Color Control	✓	
	Global Color Mapping with Pantone® Library	✓	✓
	Custom Color Mapping	✓	
	Smooth Shadow	✓	✓
DESIGN	Link PDF	✓	✓
	Vector and Text Creation & Editing	✓	✓
	Make Transparent all color modes	✓	✓
	Multiple Contour Cut Creation & Editing	✓	✓
	Auto Serialization	✓	
	Templates: Apply, Create, & Edit	✓	

FlexiPrint

RIP AND PRINT SOFTWARE



FlexiPrint 10 FAMILY OF PRODUCTS

FlexiPrint SERVER™ A complete client-server RIP solution designed for high-production environments. This powerful and intuitive package includes all of the extended capabilities and cost-savings features needed to run a successful print business. Extended features include an EDITOR application for layout and design, and an Ink Estimation tool for accurate job costing.

SAi Headquarters

Toll free: 1-800-229-9068
Tel: 1-801-478-1900
Fax: 1-801-401-7234
Email: info@SAintl.biz

SAi Europe

Tel: +32.2.725.5295
Fax: +32.2.725.2809
Email: info@SAintl.eu

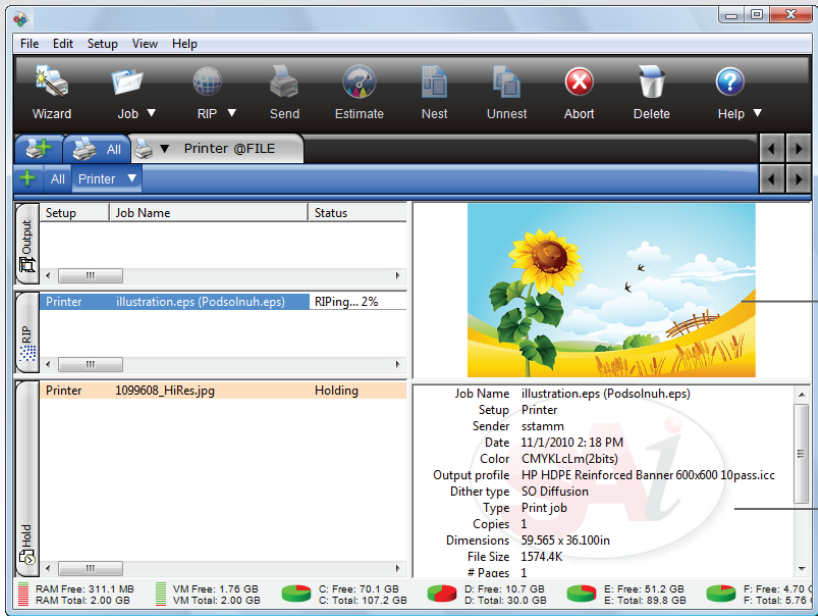
FlexiPrint™ An unparalleled layout package with design capabilities for text, shapes, effects and nesting, combined with the versatility to RIP-and-print to two devices simultaneously. A perfect solution for mid-sized production environments – design, RIP, Contour Cut, and print all within one application.

FlexiPrint is a registered trademark of SAi; Adobe is a registered trademark of Adobe Systems, Inc.; Pantone and other Pantone, Inc. trademarks are the property of Pantone, Inc.; ColorLogic is a registered trademark of ColorLogic GmbH. All other trademarks are the property of their respective owners. ©2012 SAi. All Rights Reserved.



FLEXIPRINT FAMILY 10 OFFERS THE INDUSTRY-LEADING PRINT & CUT WORKFLOW

Now made even better! Progressing along with the large format industry, FlexiPrint is designed to help your productivity ascend to new heights while maintaining SAI's signature ease-of-use interface. **FlexiPrint 10... More Than Just A RIP!**



Easily view the status of a job in the Output, RIP and Hold queues.

Preview your job quickly

Instantly review important information about your job

NEW FEATURES IN FLEXIPRINT 10



Ink Estimation

Eliminate the guesswork of job costing, with the exciting new Ink Estimation tool in FlexiPrint 10. Estimate how much ink each print job will use to help calculate the true cost of every print job. Even the most seasoned print shops will find this feature to be an incredibly useful tool. Gain a better understanding of your production and make more informed decisions about upcoming expenses, incoming jobs and daily workflow with the Ink Estimation tool.



Advanced PDF Support

This new Editor feature is sure to save sign shop owners hours of headache! Now you can link Adobe® PDF files to ensure that the intended colors are used from the original file. Add text and objects to the PDF, and even use the Make Transparent Tool and Contour Cut effect. FlexiPrint applies these changes while keeping the original colors, blends and transparencies intact.



Contour Cut Nesting in FlexiPrint

Now you can nest 3rd party Contour Cut jobs right in FlexiPrint! Add your files directly to FlexiPrint, edit each file as needed, and then nest them all together! This enhanced workflow will save media and boost your productivity.



Add Jobs with Multiple Contour Cut Paths to FlexiPrint

Take advantage of FlexiPrint's Multiple Contour Paths feature, even while designing in 3rd party applications! You can create multiple contour cut paths in any design program, but you can add final customization to those paths right in FlexiPrint! We've eliminated the extra steps to make Contour Cutting even easier.

POWERFUL AND INTUITIVE FEATURES

SO Diffusion

SAI's newest dithering technology eliminates banding and artifacts to produce the smoothest gradients and most vibrant, accurate output of any other diffusion method. Processing speeds are highly competitive.

Print Wizard

FlexiPrint already has the best workflow in the industry, but now you can use the Print Wizard feature to automate it! Print Wizard uses a basic question and answer approach to guide you through adding a job, choosing a printer, setting basic job parameters and printing. Print Wizard even makes color correction easy when you use the Variations feature.

Multiple Contour Cut Paths

Looking to simplify your Print & Cut workflow? Create multiple contour paths, customize your own contour path style, and assign different colors to each path. You can also adjust different settings for each contour in the Contour tab of the RIP & Print dialog.

Application Direct Printing

Simply looking for a great RIP to print your designs? Search no further! With dynamic PPDs, you can print from any desktop application that has a "Print" button, including design programs and even internet browsers. You can also use this feature with a networked printer to allow several designers to send to one printer.

Nesting

True Job Nesting allows you to nest multiple print jobs within FlexiPrint. Both features save you time and money, and both are inherent features in FlexiPrint 10.

Color Profiling

With FlexiPrint 10 you get consistent control of color and you save yourself time and energy, not to mention wasted paper and ink. Harness the power of the open architecture of FlexiPrint, which allows you to use many different devices including the X-Rite® i1 spectrophotometer.

Compatibility

From the latest and greatest print drivers FlexiPrint 10 has your back with tons of drivers to run just about any printer on the planet. In addition, FlexiPrint 10 has thousands of ICC profiles built in, giving you the best print quality available in the least amount of time. Whether you are running a state of the art sign shop, or simply cutting stickers on an old plotter, FlexiPrint 10 is the software for you!

Updated computer? FlexiPrint is now compatible with Windows™ 7 32-bit and 64-bit machines.